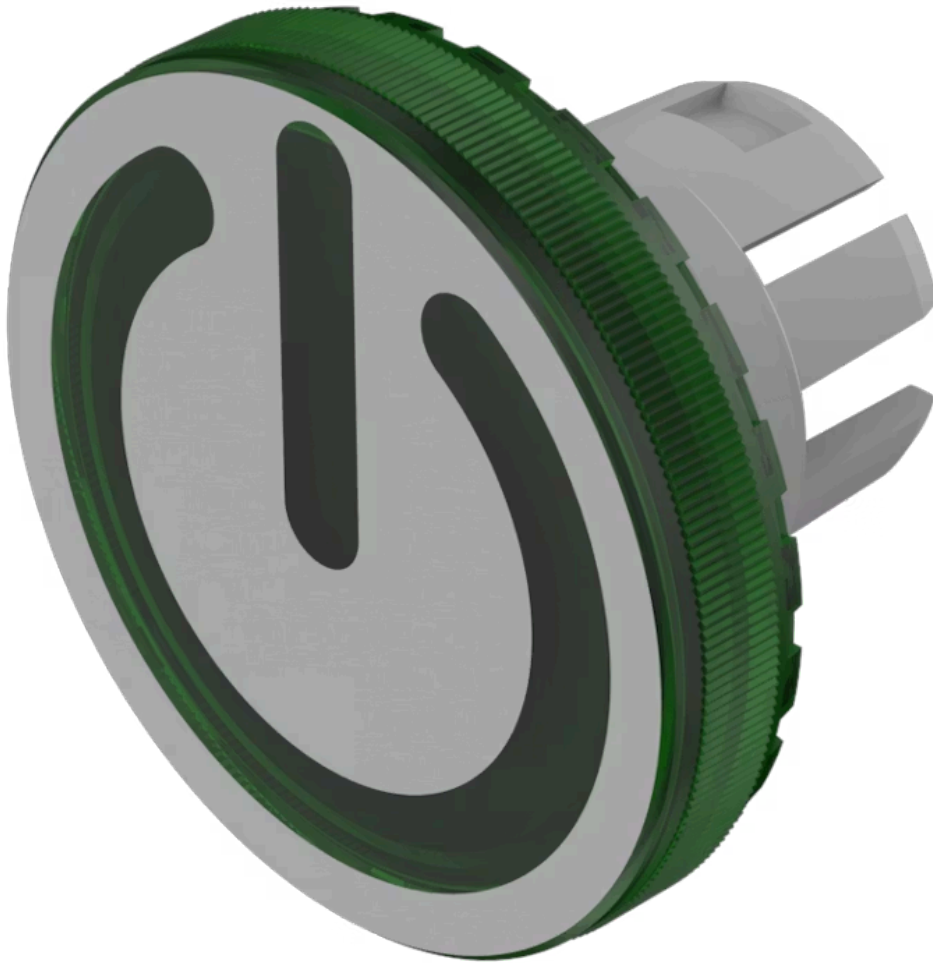


Lens

84-
7111.503

Distribution by
Farnell



<https://farnell.eao.com/component/84-7111.503...>

Your product:



84-7111.503 Lens

Loading ...

FRONT

Front form: Round

OPERATING-/INDICATION PART

Lens colour: Green

Lens material: Plastic

Lens illumination: Illuminated

Lens shape: Flush

Lens optics: transparent

Lens type: Level with front bezel

Symbol: Standby

Shape of illumination: Symbol

MECHANICAL CHARACTERISTICS

Weight: 0.001 kg

CERTIFICATE

REACH: REACH compliant

RoHS: RoHS compliant

OTHER

Short Description: Lens, Ø 19.7 mm, Illuminated, Standby, Green, Flush, Plastic

Dimension: Ø 19.7 mm

Hints:

The silvery coat is being applied on the lens (screen print) with an additional protective lacquer. Further information see Technical data

Description component:

Material lens: Plastic as per UL94 V2