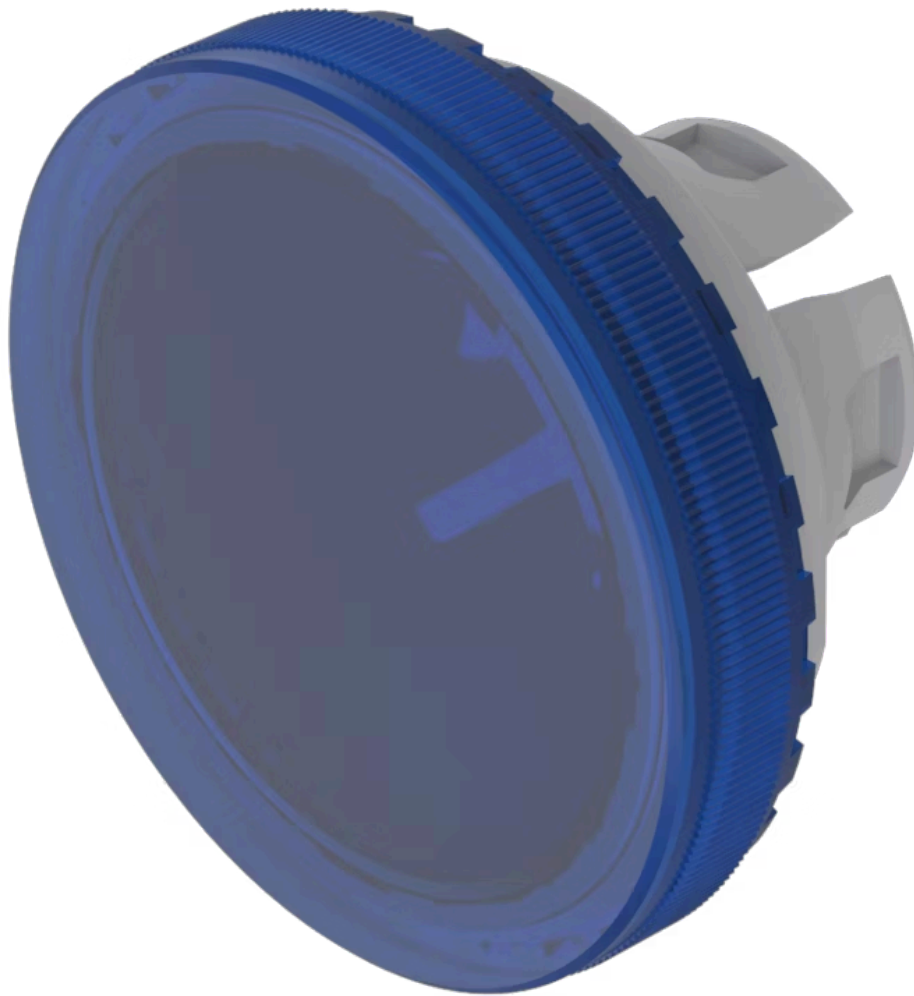


Lens

84-
7115.600

Distribution by
Farnell



<https://farnell.eao.com/p/84-7115.600>

Your product:



84-7115.600
Lens

FRONT

Front form: Round

OPERATING-/INDICATION PART

Lens colour: Blue

Lens material: Plastic

Lens illumination: Illuminated

Lens shape: Flush

Lens optics: transparent

Lens type: Raised above front bezel

Symbol: No Symbol

Shape of illumination: Front

MECHANICAL CHARACTERISTICS

Weight: 0.001 kg

CERTIFICATE

REACH: REACH compliant

RoHS: RoHS compliant

OTHER

Short Description: Lens, Ø 19.7 mm, Illuminated, No Symbol, Blue, Flush, Plastic

Dimension: Ø 19.7 mm

Description component:

Material lens: Plastic as per UL94 V2