

# E-stop protective shroud

84-902

Distribution by  
Farnell



<https://farnell.eao.com/component/84-902/en/e...>

Your product:

---



## 84-902 E-stop protective shroud

*Loading ...*

### FRONT

**Colour:** Yellow

### MECHANICAL CHARACTERISTICS

**Weight:** 0.009 kg

### AMBIENT CONDITION

**IP front protection:** IP65

### OTHER

**Short Description:** E-stop protective shroud, Ø 50 mm, Plastic, Yellow

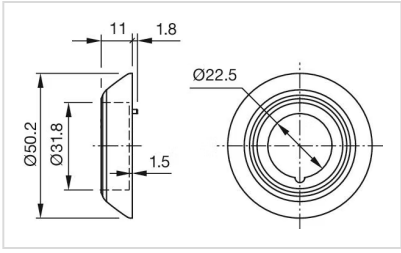
**Title Accessory:** E-stop protective shroud

**Dimension:** Ø 50 mm

**Material:** Plastic

**Hints:** Front panel thickness 1 ... 3 mm  
With anti-twist device  
When using a protective shroud the e-stop or stop-switch has to be turned by 180° to be mounted. See dimensional drawing  
The protection shroud Part No. 84-909 is not suitable for a proper use of emergency-stop. It can obstruct a spontaneous operation of the emergency-stop switch  
This shroud Part No. 84-906 is not compliant to EN ISO 13850. There are no restrictions when combined with stop switches.

**Dimension drawings:**



for Part No. 84-902, 84-902A  
84-902B, 84-904C