

E-stop protective shroud

84-909

Distribution by
Farnell



Your product:



84-909 E-stop protective shroud

Loading ...

FRONT

Colour: Yellow

MECHANICAL CHARACTERISTICS

Weight: 0.021 kg

AMBIENT CONDITION

IP front protection: IP40

OTHER

Short Description: E-stop protective shroud, Ø 45 mm, Metal, Yellow

Titel Accessory: E-stop protective shroud

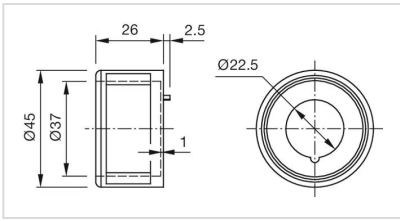
Dimension: Ø 45 mm

Material: Metal

Hints: Front panel thickness 1 ... 3 mm
With anti-twist device
When using a protective shroud the e-stop or stop-switch has to be turned by 180° to be mounted. See dimensional drawing
The protection shroud Part No. 84-909 is not suitable for a proper use of emergency-stop. It can obstruct a spontaneous operation of the emergency-stop switch
This shroud Part No. 84-906 is not compliant to EN ISO 13850. There are no restrictions when combined with stop switches.

Colour RAL: 1003 RAL

Dimension drawings:



for Part No. 84-909