

Housing pole mounting

84-9500.6A

Distribution by
Farnell



<https://farnell.eao.com/p/84-9500.6A>

Your product:



84-9500.6A

Housing pole mounting

FRONT

Colour: Traffic blue

MOUNTING

Mounting cut-out: Ø 22,5 mm

Mounting type: pole mounting Ø35mm

MECHANICAL CHARACTERISTICS

Weight: 0.035 kg

CERTIFICATE

REACH: REACH compliant

RoHS: RoHS compliant

OTHER

Short Description: Housing pole mounting

Dimension: Ø 35 mm x 111 mm x 38.7 mm

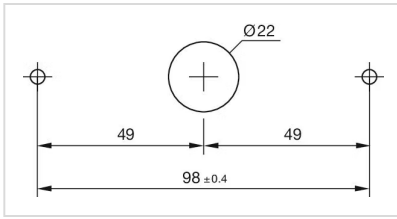
Material: Plastic

Product attributes: Housing pole mounting Ø 35 mm

Hints: Screws are not contained in the scope of supply, Please note: The cut-out of the pole must read min. 22 mm and needs to be aligned with the switch

Colour RAL: 5017 RAL

Mounting cut-outs:



Dimension drawings:

