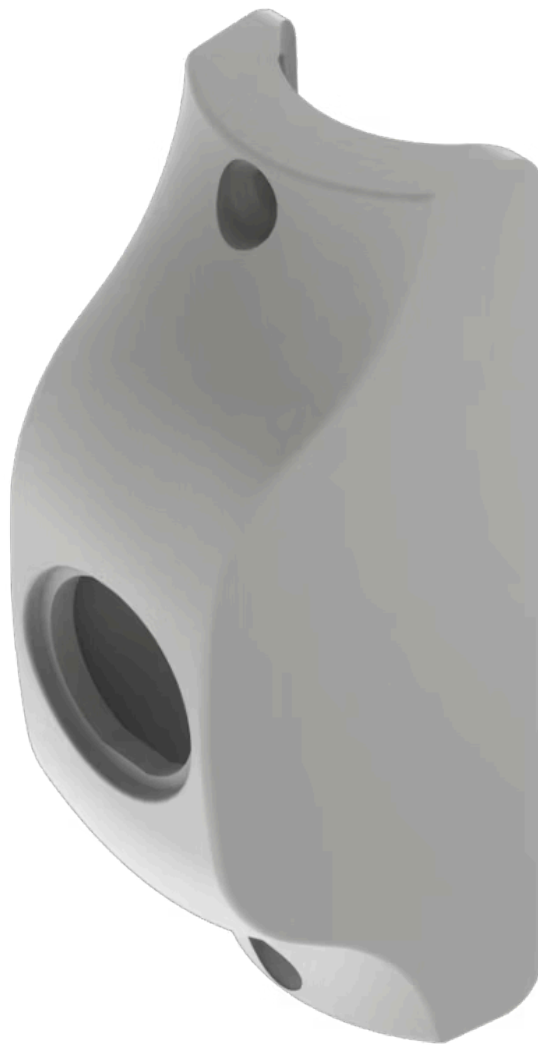


Housing pole mounting Ø 38 mm

84-9600.8

Distribution by
Farnell



<https://farnell.eao.com/component/84-9600.8/e...>

Your product:



84-9600.8 Housing pole mounting Ø 38 mm

Loading ...

FRONT

Colour: Grey

MOUNTING

Mounting cut-out: Ø 22.5 mm

Mounting type: pole mounting Ø38mm

MECHANICAL CHARACTERISTICS

Weight: 0.03 kg

CERTIFICATE

REACH: REACH compliant

RoHS: RoHS compliant

OTHER

Short Description: Housing pole mounting Ø 38 mm

Dimension: Ø 38 mm x 110.5 mm x 38 mm

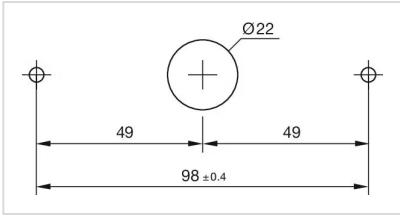
Material: Plastic

Product attributes: Housing pole mounting Ø 38 mm

Hints: Screws are not contained in the scope of supply
Please note: The cut-out of the pole must read min. 22 mm and needs to be aligned with the switch

Colour RAL: 7016 RAL

Mounting cut-outs:



Dimension drawings:

