

## Capacitive sensor switch with IO-Link Hygiene

84-ACKS-B15-04BE

Distribution by  
Farnell



<https://farnell.eao.com/p/84-ACKS-B15-04BE>

Your product:

---



84-ACKS-B15-04BE

Capacitive sensor switch with IO-Link  
Hygiene

#### FRONT

Front dimension:	Ø 30 mm
Front form:	Round
Front bezel material:	Stainless steel 316L

#### MOUNTING

Design:	Flush
Mounting cut-out:	Ø 22.5 mm
Mounting type:	Panel mounting

#### OPERATING-/INDICATION PART

Lens material:	Plastic
Lens illumination:	Illuminated
Lens shape:	Flush
Lens optics:	transparent
Symbol:	arrows (B15)

#### ELECTRICAL CHARACTERISTICS

Operating voltage:	8.4 - 32 V DC
Communication interface:	IO-Link specification

#### MECHANICAL CHARACTERISTIC

Terminal:	Connector M12
-----------	---------------

<b>Switching system:</b>	Capacitive
<b>Operating force:</b>	No actuating force necessary
<b>Weight:</b>	0.015 kg

## AMBIENT CONDITION

<b>IP front protection:</b>	IP69K
<b>IK front protection:</b>	IK08
<b>Operating temperature:</b>	– 30 °C ... + 65 °C
<b>Climate resistance:</b>	Relative humidity, max. 95%, non-condensing

## CERTIFICATE

<b>Approbations:</b>	CSA, EHEDG
<b>Conformities:</b>	CE, UKCA
<b>REACH:</b>	REACH compliant
<b>RoHS:</b>	RoHS compliant

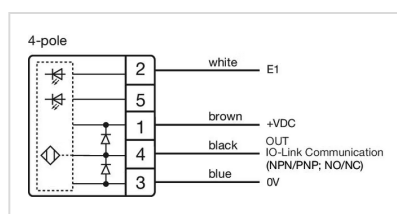
## OTHER

<b>Short Description:</b>	Capacitive sensor switch with IO-Link Hygiene, Ø 22.5 mm, Ø 30 mm, Flush, Illuminated, Plastic, transparent, Round, Stainless steel 316L, Connector M12, IP69K, IK08, arrows (B15)
---------------------------	------------------------------------------------------------------------------------------------------------------------------------------------------------------------------------

<b>Housing colour:</b>	Black
------------------------	-------

<b>Housing material:</b>	Plastic
--------------------------	---------

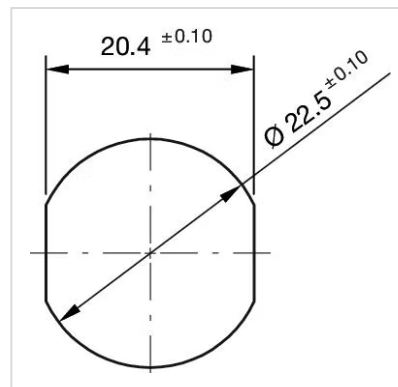
### Wiring diagrams:



### Component layouts:



**Mounting cut-outs:**



**Dimension drawings:**

