

Capacitive sensor switch with IO-Link Stainless Steel

84-ADKS-C14-04B3

Distribution by
Farnell



<https://farnell.eao.com/p/84-ADKS-C14-04B3>

Your product:



84-ADKS-C14-04B3

Capacitive sensor switch with IO-Link
Stainless Steel

FRONT

| | |
|-----------------------|----------------------|
| Front dimension: | Ø 30 mm |
| Front form: | Round |
| Front bezel material: | Stainless steel 316L |

MOUNTING

| | |
|-------------------|----------------|
| Design: | Flush |
| Mounting cut-out: | Ø 22.5 mm |
| Mounting type: | Panel mounting |

OPERATING-/INDICATION PART

| | |
|--------------------|---------------|
| Lens material: | Plastic |
| Lens illumination: | Illuminated |
| Lens shape: | Flush |
| Lens optics: | transparent |
| Symbol: | Standby (C14) |

ELECTRICAL CHARACTERISTICS

| | |
|--------------------------|-----------------------|
| Operating voltage: | 8.4 - 32 V DC |
| Switching rating: | |
| Communication interface: | IO-Link specification |

MECHANICAL CHARACTERISTIC

| | |
|--------------------------|------------------------------|
| Terminal: | Connector M12 |
| Switching system: | Capacitive |
| Operating force: | No actuating force necessary |
| Weight: | 0.015 kg |

AMBIENT CONDITION

| | |
|-------------------------------|---|
| IP front protection: | IP69K |
| IK front protection: | IK08 |
| Operating temperature: | – 30 °C ... + 65 °C |
| Climate resistance: | Relative humidity, max. 95%, non-condensing |

CERTIFICATE

| | |
|----------------------|-----------------|
| Approbations: | CSA, EHEDG |
| Conformities: | CE, UKCA |
| REACH: | REACH compliant |
| RoHS: | RoHS compliant |

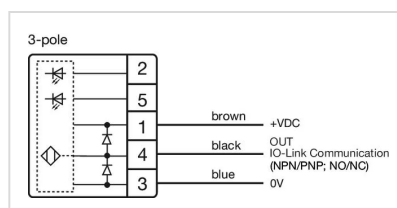
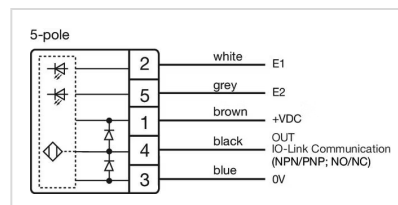
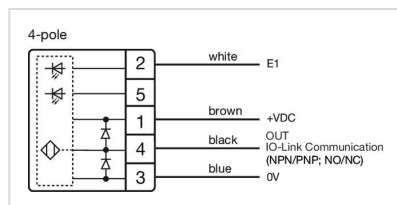
OTHER

| | |
|---------------------------|---|
| Short Description: | Capacitive sensor switch with IO-Link Stainless Steel, Ø 22.5 mm, Ø 30 mm, Flush, Illuminated, Plastic, transparent, Round, Stainless steel 316L, Connector M12, IP69K, IK08, Standby (C14) |
|---------------------------|---|

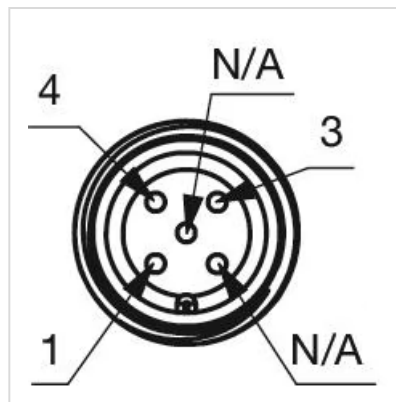
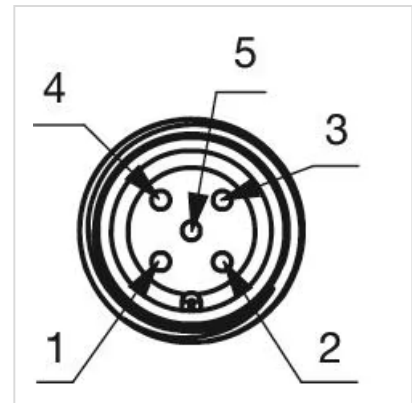
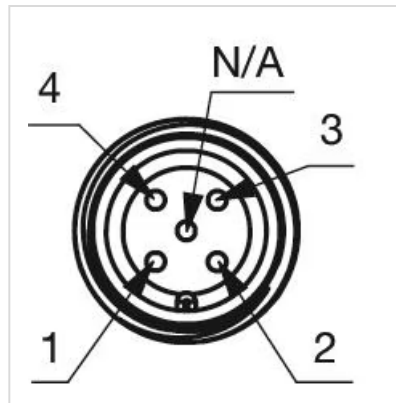
| | |
|------------------------|-------|
| Housing colour: | Black |
|------------------------|-------|

| | |
|--------------------------|---------|
| Housing material: | Plastic |
|--------------------------|---------|

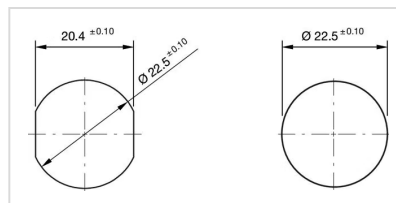
Wiring diagrams:



Component layouts:



Mounting cut-outs:



Dimension drawings:

