

# Capacitive sensor switch with IO-Link Stainless Steel

84-ADKS-C20-04B8

Distribution by  
Farnell



<https://farnell.eao.com/p/84-ADKS-C20-04B8>

Your product:

---



84-ADKS-C20-04B8

Capacitive sensor switch with IO-Link  
Stainless Steel

#### FRONT

|                       |                      |
|-----------------------|----------------------|
| Front dimension:      | Ø 30 mm              |
| Front form:           | Round                |
| Front bezel material: | Stainless steel 316L |

#### MOUNTING

|                   |                |
|-------------------|----------------|
| Design:           | Flush          |
| Mounting cut-out: | Ø 22.5 mm      |
| Mounting type:    | Panel mounting |

#### OPERATING-/INDICATION PART

|                    |             |
|--------------------|-------------|
| Lens material:     | Plastic     |
| Lens illumination: | Illuminated |
| Lens shape:        | Flush       |
| Lens optics:       | transparent |
| Symbol:            | C20         |

#### ELECTRICAL CHARACTERISTICS

|                          |                       |
|--------------------------|-----------------------|
| Operating voltage:       | 8.4 - 32 V DC         |
| Switching rating:        |                       |
| Communication interface: | IO-Link specification |

#### MECHANICAL CHARACTERISTIC

|                          |                              |
|--------------------------|------------------------------|
| <b>Terminal:</b>         | Connector M12                |
| <b>Switching system:</b> | Capacitive                   |
| <b>Operating force:</b>  | No actuating force necessary |
| <b>Weight:</b>           | 0.015 kg                     |

## AMBIENT CONDITION

|                               |   |
|-------------------------------|---|
| <b>IP front protection:</b>   | IP69K                                       |
| <b>IK front protection:</b>   | IK08  |
| <b>Operating temperature:</b> | – 30 °C ... + 65 °C                         |
| <b>Climate resistance:</b>    | Relative humidity, max. 95%, non-condensing |

## CERTIFICATE

|                      |                 |
|----------------------|-----------------|
| <b>Approbations:</b> | CSA, EHEDG      |
| <b>Conformities:</b> | CE, UKCA        |
| <b>REACH:</b>        | REACH compliant |
| <b>RoHS:</b>         | RoHS compliant  |

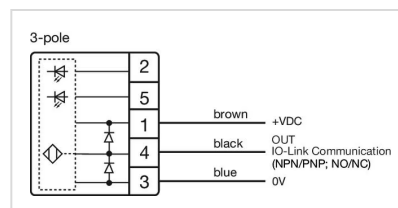
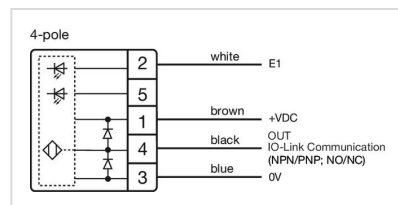
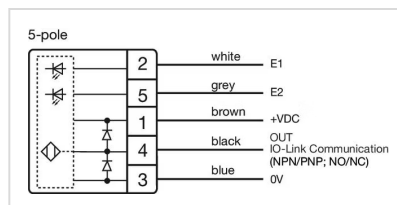
## OTHER

|                           |   |
|---------------------------|---|
| <b>Short Description:</b> | Capacitive sensor switch with IO-Link Stainless Steel, Ø 22.5 mm, Ø 30 mm, Flush, Illuminated, Plastic, transparent, Round, Stainless steel 316L, Connector M12, IP69K, IK08, C20 |
|---------------------------|---|

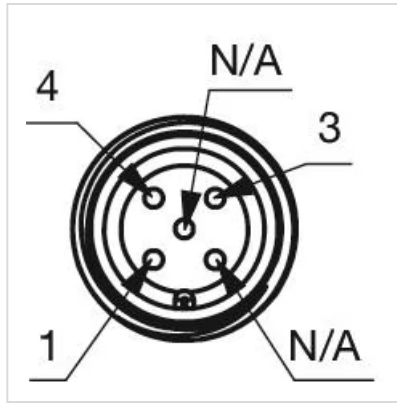
|                        |       |
|------------------------|-------|
| <b>Housing colour:</b> | Black |
|------------------------|-------|

|                          |         |
|--------------------------|---------|
| <b>Housing material:</b> | Plastic |
|--------------------------|---------|

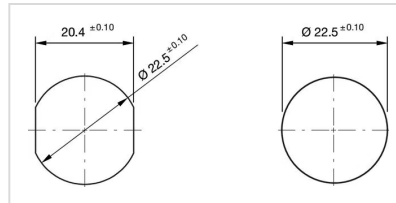
### Wiring diagrams:



### Component layouts:



#### Mounting cut-outs:



#### Dimension drawings:

