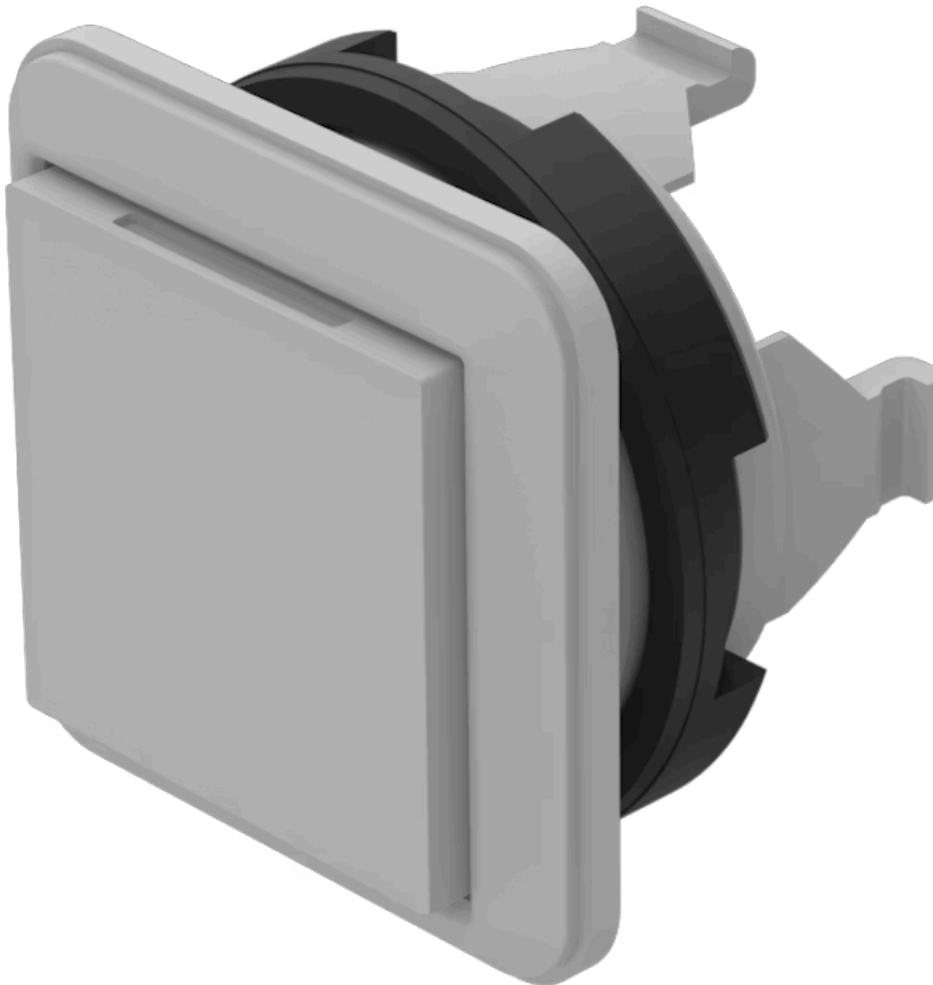


# Actuator

92-  
356.800

Distribution by  
Farnell



<https://farnell.eao.com/component/92-356.800/...>

Your product:



# 92-356.800 Actuator

## FRONT

|                       |                   |
|-----------------------|-------------------|
| Front dimension:      | 18,4 mm x 18,4 mm |
| Front form:           | Square            |
| Front bezel colour:   | White             |
| Front bezel material: | Plastic           |

## MOUNTING

|                |                |
|----------------|----------------|
| Design:        | PCB            |
| Mounting type: | Panel mounting |

## OPERATING-/INDICATION PART

|                    |                 |
|--------------------|-----------------|
| Lens colour:       | Grey            |
| Lens material:     | Plastic         |
| Lens illumination: | Non illuminated |
| Lens shape:        | Flush           |
| Lens optics:       | opaque          |

## ELECTRICAL CHARACTERISTICS

|  |  |                                       |
|--|--|---------------------------------------|
| Switching voltage and switching current: | Switching voltage  | min. 50 m VAC/DC<br>max. 42 VAC/DC    |
|  | Switching current  | min. 10 µA AC/DC<br>max. 100 mA AC/DC |
|  | Power rating   | max. 2 W                              |
| Switching rating:                        | 42 V   |                                       |
| Electrical lifetime:                     | 500 000 cycles of operation at 42VDC, 50mA, according to IEC 6512-5-9c |                                       |
| Electric strength:                       |  |                                       |

500 VAC, 50 Hz, 1 minute according to IEC 60512-5-9c

**Electrostatic discharge (ESD):** 15 kV

## MECHANICAL CHARACTERISTICS

**Switching action:** Momentary

**Switching system:** Short-travel element

**Switching system:** Short-travel switching system with 2 independent contact points  
Guarantees reliable switching even of very light loads. Fitted with 1 normally open contact.

**Mechanical lifetime:**  $\geq 1$  Mil. cycles of operation

**Operating force:** 2.7 N  $\pm$  1 N switching element, 5 N lens

**Operating Travel:** ca. 0.4 mm switching element

**Tightening torque:** Fixing nut max. 0.5 Nm, Fixing screw mounting flange 0.4 Nm

**Weight:** 0.017 kg

## AMBIENT CONDITION

**IP front protection:** IP40

**IP Protection:** IP40 front side

**Operating temperature:** - 25 °C ... + 70 °C

**Storage temperature:** - 40 °C ... + 80 °C

**Shock resistance:** Max. 500 m/s<sup>2</sup>, pulse width, 3-axis (sinusoidal EN IEC 60068-2-27)

**Vibration resistance:** Max. 100 m / s<sup>2</sup> from 10 Hz ... 500 Hz, 10 cycles, 3-axis (sinusoidal EN IEC 60068-2-6)

## CERTIFICATE

**Approbations:** CQC

**Conformities:** CE, UKCA, 2011 / 65 / EC (RoHS), 2014 / 35 / EU (LVD)

**REACH:** REACH compliant

**RoHS:** RoHS compliant

## OTHER

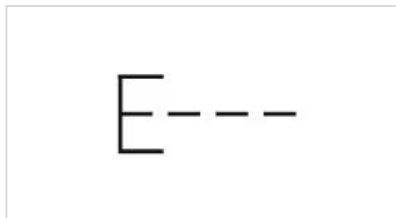
**Short Description:** Actuator, 18,4 mm x 18,4 mm, Flush, Non illuminated, Grey, Plastic, opaque, Square, White, Plastic, Momentary, IP40

**Dimension:** 18.4 mm x 18.4 mm

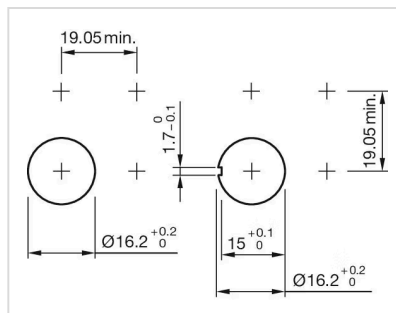
**Housing colour:** White

**Housing material:** Plastic

**Wiring diagrams:**



**Mounting cut-outs:**



**Dimension drawings:**

